

PURPOSE

This guide will describe how to properly configure firewall and network settings to establish communication to Gantner DAQ systems using Gantner software tools.

FIREWALL SETTINGS

We will be providing exceptions for the Gantner Instruments software tools. Please make sure your PC user account has the sufficient privileges to make these changes.

1. The Gantner Instruments software performs reads/writes to the hardware via Ethernet. The firewall on the PC (Windows or 3rd party) must allow these tasks to operate.
2. Turn Windows Firewall off
 - a. Open Control Panel
 - b. Navigate to System and Security → Windows Firewall
 - c. On the left-hand menu select Turn Windows Firewall on or off
 - d. Select Turn off Windows Firewall
3. If turning off Windows Firewall is not an option, exceptions can be provided for the software.
 - a. Open Control Panel
 - b. Navigate to System and Security → Windows Firewall
 - c. On the left-hand menu select Allow a program or feature through Windows Firewall
 - d. From the list, select all the Gantner tools or select Allow another program if it isn't already listed.
4. Firewall exceptions to add based on the software installed:
 - a. test.commander
 - i. ControllerUpdateTool
 - ii. Green Eye - Writer / test.viewer
 - iii. SetupAssistant
 - iv. test.commander
 - v. test.con **if installed*
 - b. Gl.bench
 - i. Gl data handling system
 - ii. Gl.com application
 - iii. Gl.config - Gl.bench sub-application

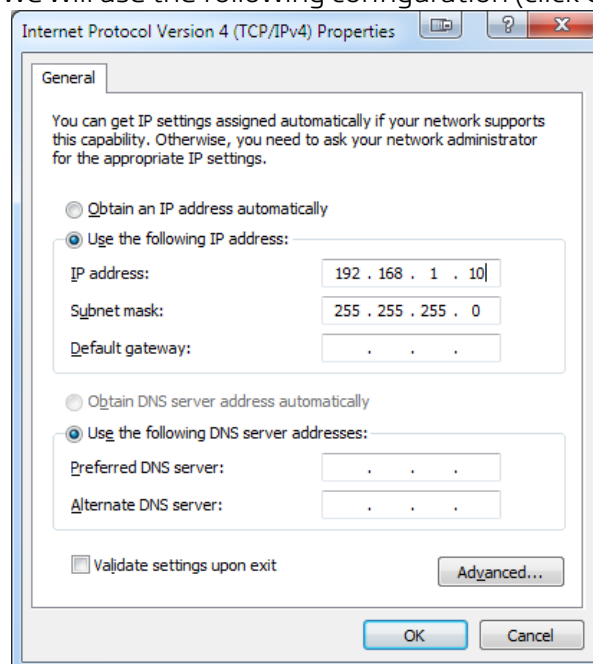
- iv. Gl.service - Gl.bench sub-application
- v. gibenchui

NETWORK SETTINGS

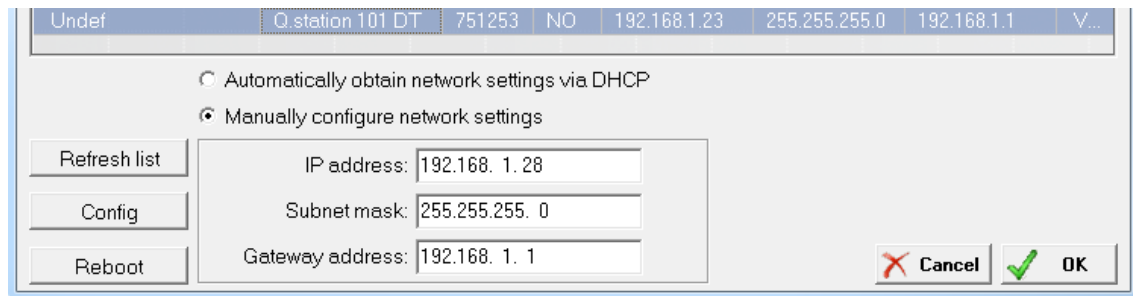
If the PC and Gantner DAQ system are connected to the same network, the PC and DAQ system will each obtain an IP address automatically (i.e. DHCP). By default, a Gantner test controller has DHCP enabled.

If the PC and DAQ system are connected directly via Ethernet cable, the PC requires a static IP address.

1. Configure a static IP address for the PC:
 - Control Panel → Network and Internet → Network and Sharing Center
 - On the left-hand menu select Change Adapter Settings
 - Right-click on Local Area Connection → Properties → select Internet Protocol Version 4 (TCP/IPv4) > Click Properties
 - Enter an IP address on the same network as the controller but a different address.
 - o Example:
Controller: 192.168.1.28 (Default)
PC (IPv4): 192.168.1.10
2. For this example we will use the following configuration (click OK to confirm changes):



3. Provide power to the modules and connect an Ethernet cable from the controller to the PC. The controller can also be connected to the PC via a switch.
4. Configure a static IP address for the Gantner controller:
 - Start test.commander. Go to Utilities → Controller Network Terminal.
 - Refresh list in case no controller is detected. Select controller from list.
 - Change to 'Manually configure network settings'. Enter desired IP address.
 - Subnet mask should be the same as the PC's.
 - Gateway address is also on the same network address but a different address.
 - o Example:
IP Address: 192.168.1.28
Subnet Mask: 255.255.255.0
Gateway Address: 192.168.1.1



- Click 'Config' to upload the changes to the controller. Refresh list to confirm changes have been made. Click OK to exit.
5. Verify connection by going to File → Read Online Values From Controller...
 6. If controller can be found in the DLL Scanning Network window then the firewall and network settings have been properly configured