



## Q. uick Start Guide: Q.brixx Power Connector Assembly Guide

Purpose: Every Q.brixx controller shipped from Gantner Instruments is provided with an AC to DC power adapter and cable. The adapter has the LEMO connector pre-fitted for seamless connection to the Q.brixx controller. For situations when the LEMO connector needs to be disassembled and/or a secondary LEMO connector needs to be used, this guide will explain how to use such connector.



### Pin Orientation:

Power connector

Top Pin: +10-30 VDC

Bottom Pin: 0V

Sync Connector

1:1 from 1<sup>st</sup> Q.brixx to 2<sup>nd</sup> Q.brixx

CAN Connector (Q.station only)

Top Pin: CAN H

Top Pin: CAN L

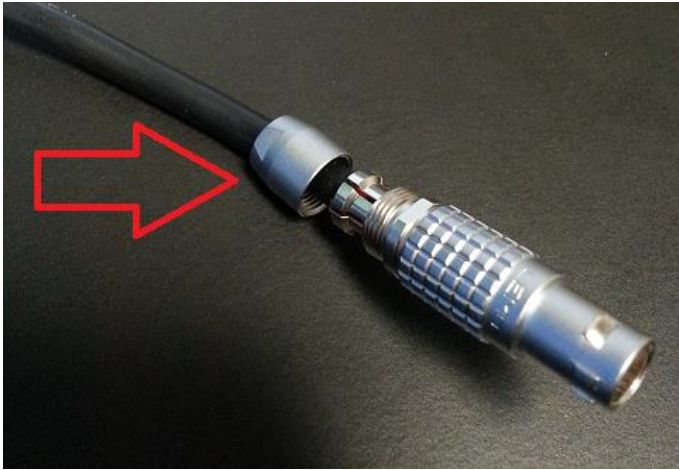


Procedure:

The Sync connectors and the CAN connector are the same part #. The assembly of the Power connectors vs. Sync connectors is identical; both parts have the same assembly configuration.

Note: Gantner Instruments does not recommend cutting the cables of the AC to DC adapter, but can be done so in a worst case scenario.

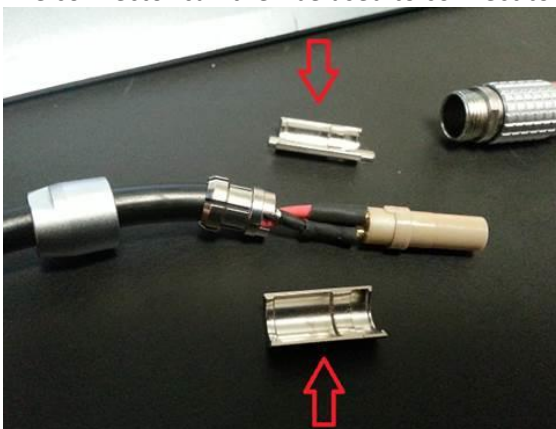
1. Unscrew the cap and slide backwards:



2. Slowly remove the main housing, be careful as the internal parts may fly out:



3. Remove the 2 x internal parts to reveal the wire connections. The wires can be desoldered here. The connector can then be used to connect to another power source.





4. When reassembling the connector, make sure the correct wire is connected to the top pin (i.e. +V for the power connector). The internal casing needs to be aligned as shown below:



5. Slide the main housing over the internal parts and secure the cap to finish the process.