

DEWESoft Installation Guide

1. Installation of DEWESoft

To install, please use the following link to download the DEWESoft software:

<http://www.dewesoft.org/download.php>



Software

	Description	Download
DEWESoft 6.6	Installation for the latest released version of DEWESoft. If you already have a license of DEWESoft 6.x, please download it free of charge. If you haven't got DEWESoft yet, you can download and try the demo mode without the hardware. If you like it and would like to try it out with the real hardware, register and ask for evaluation licence here . Release notes	Download
DEWESoft Viewer	DEWESoft viewer allows you to view DEWESoft data files.	Download

Before being able to start the downloading process, you need to register with DEWESoft.



Welcome back! Please use the form below to login.

Login form

E-mail *

Password *

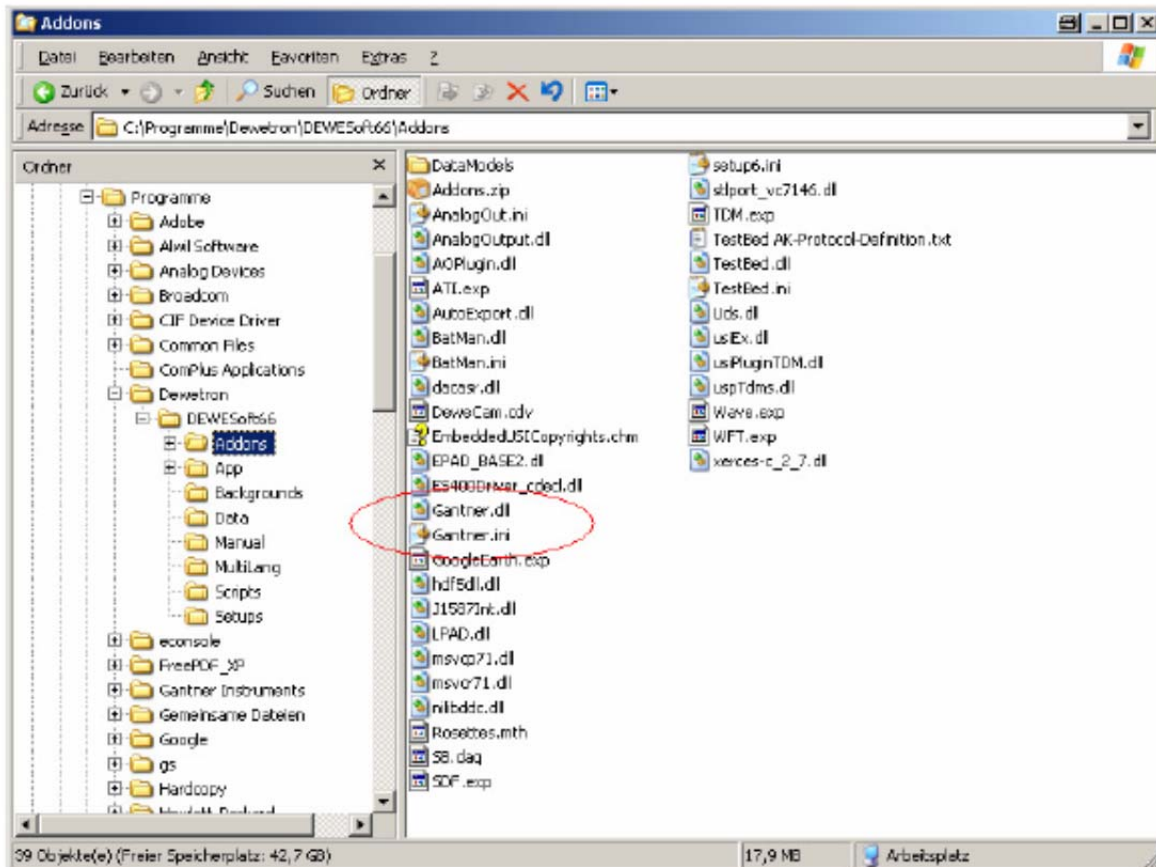
[Forgot your password?](#)
[New user? Register here.](#)

After download the is complete, the installation of the software can begin by starting the DEWESoft660_Fullinstaller.exe file.

DEWESoft Installation Guide

When using the DEWESoft program with Gantner Instruments, you need to load the Gantner.dll in the following directory:

C:\Program Files\ Dewetron\ Dewesoft66\Addons

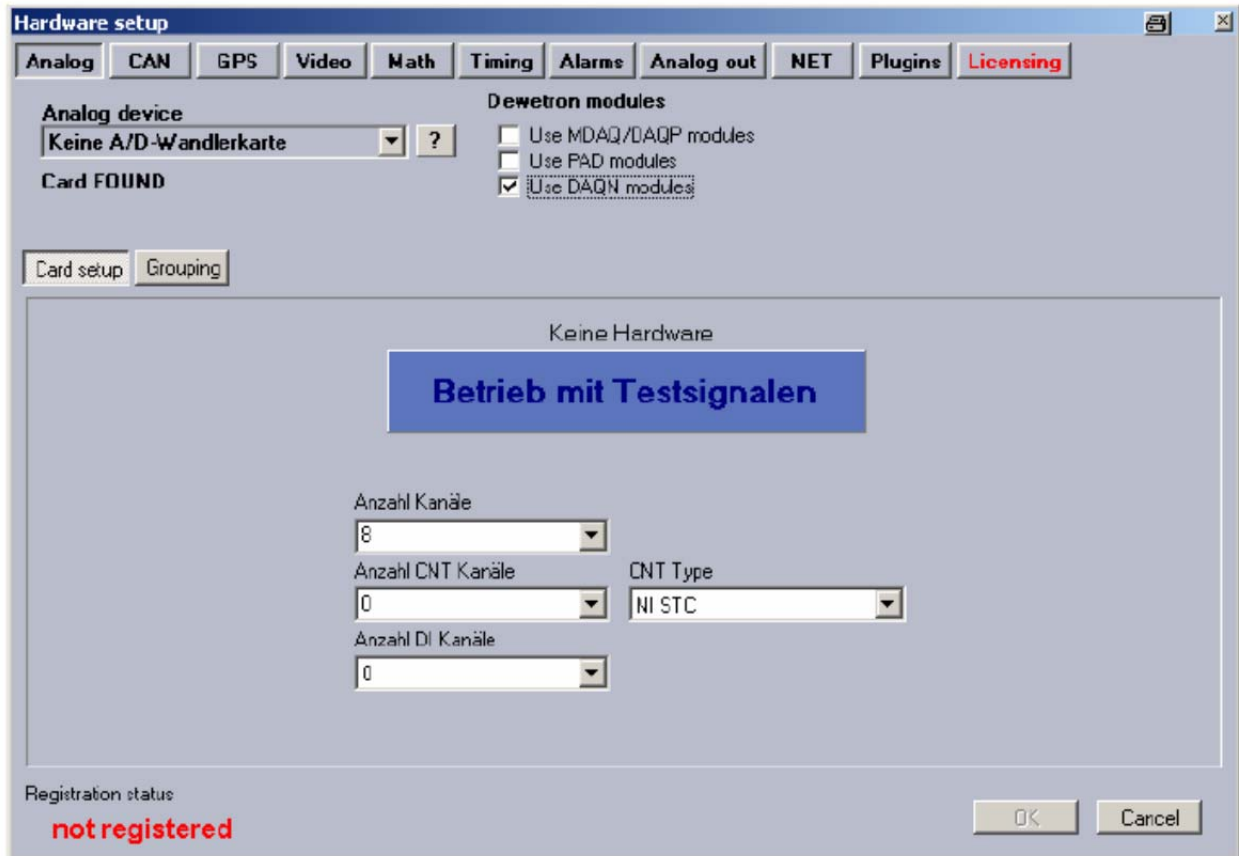


After this step is complete the Gantner Instruments controllers will be visible in DEWESoft.

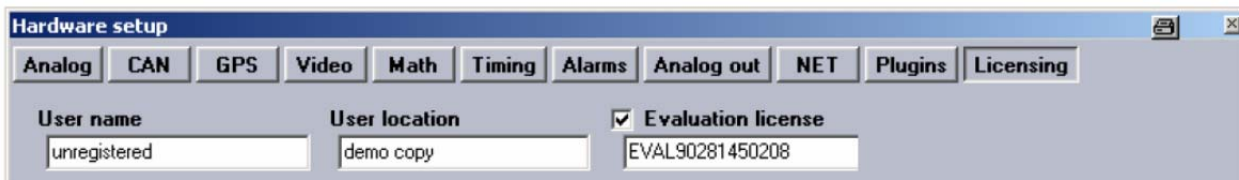
2. Enable connection between controller and DEWESoft

Start the DEWESoft software. The first time DEWESoft is started the following page will be shown:

DEWESoft Installation Guide

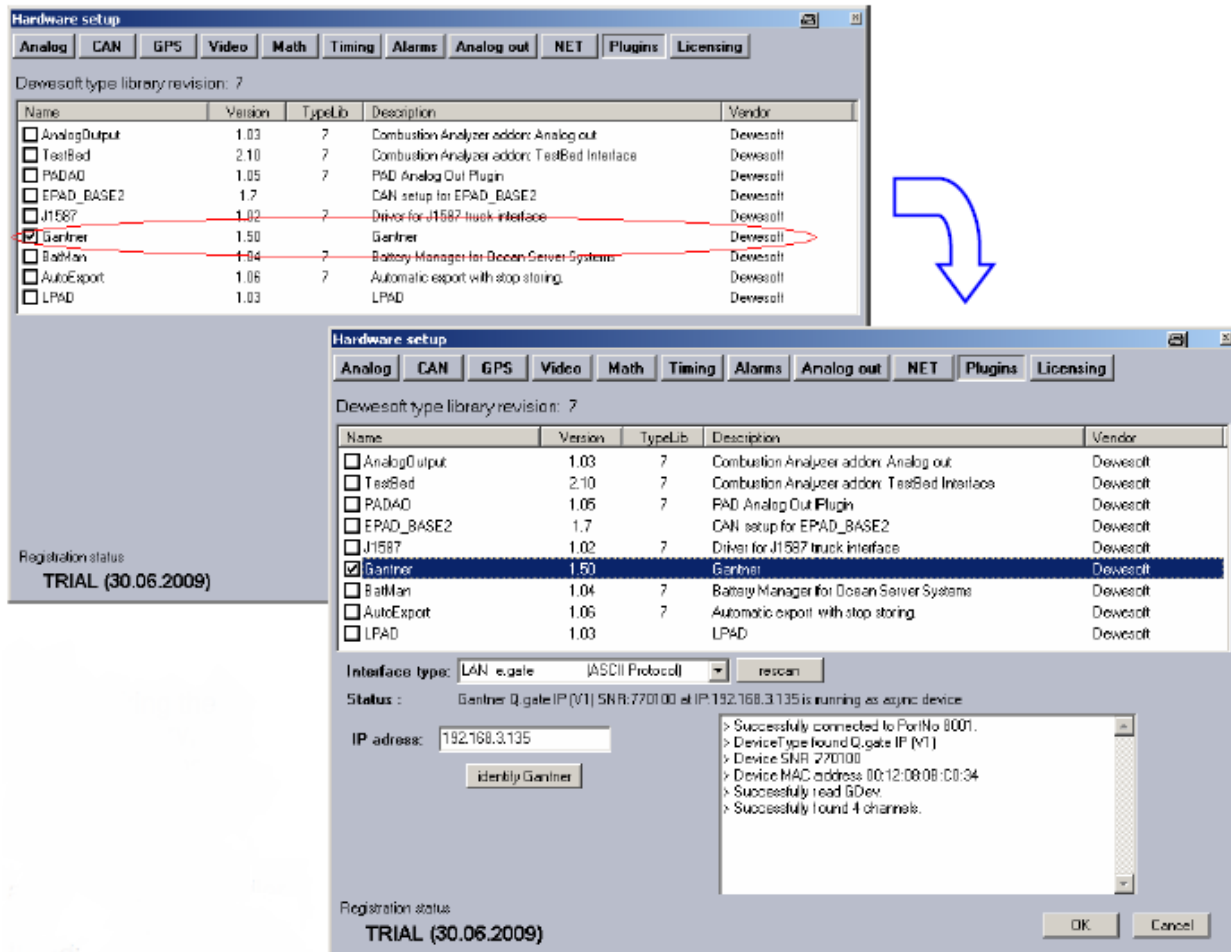


If this page appears, push the Licensing button and enter your license code.



After, press the Plugins button to display the library where the Gantner unit can be selected.

DEWESoft Installation Guide

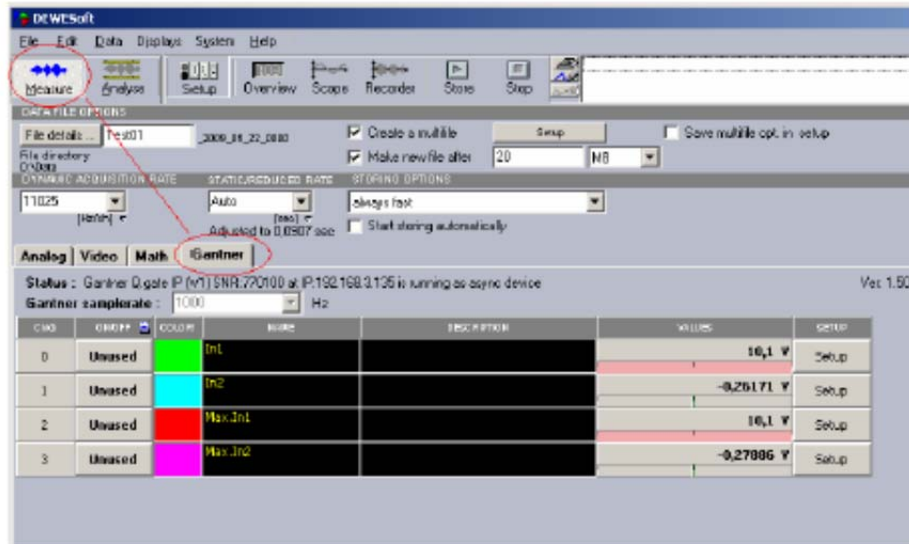


After selecting the Gantner controller inside the library, different buttons will appear. In our case, scan the network for the IP address of the LPAD controller.

After the scanning process, the content in the right window will be shown. If no errors appears and the window looks like the picture above, the controller has successfully been connected.

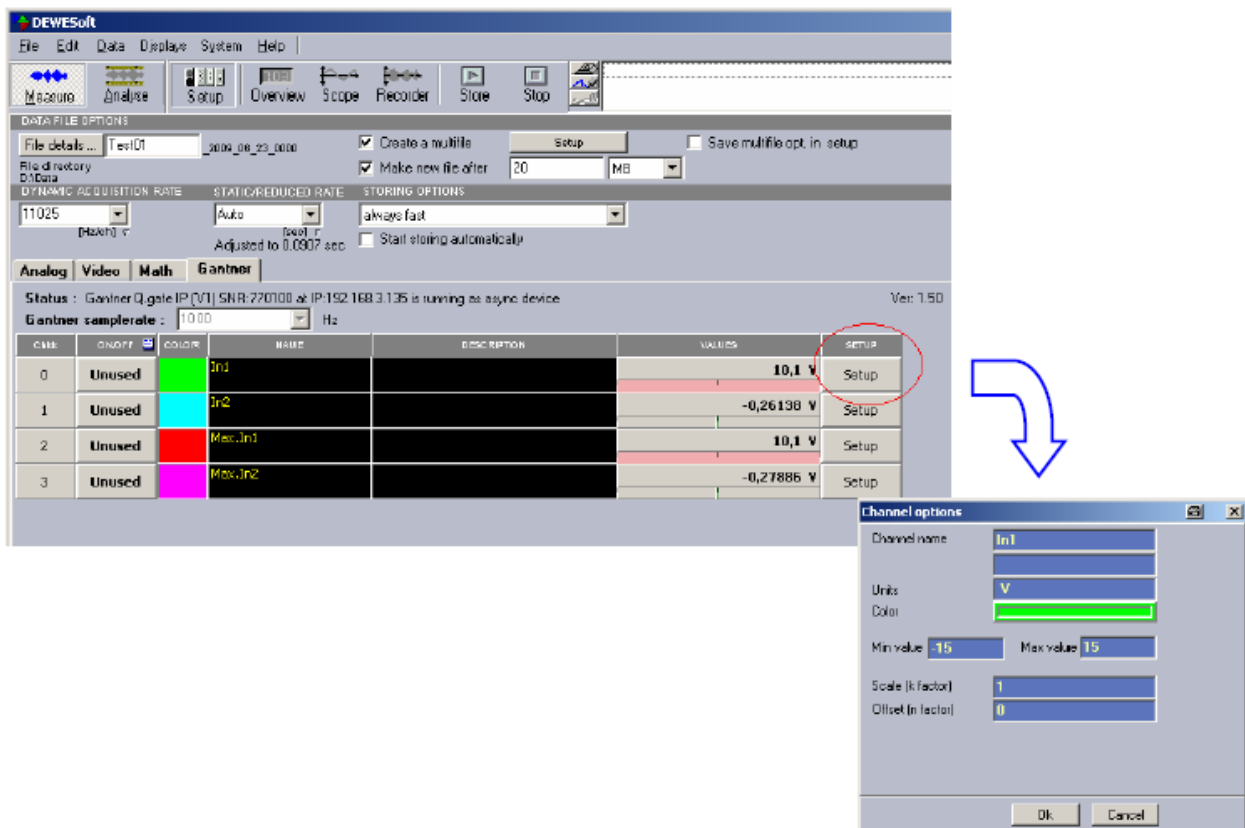
Push the Ok button. After this, choose the Measure button. Now you will see the Gantner tab. Under this tab, you will see the different channels connected to the test controller.

DEWESoft Installation Guide



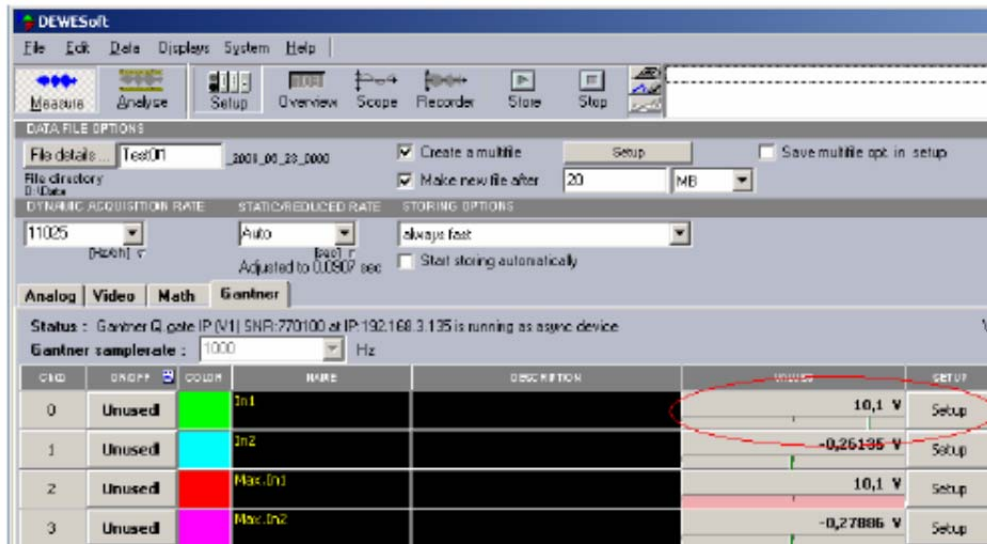
3. Configure channels/video

In the picture, the channel In1 & Max.In1, the channel options are incorrect. This is known because the red bar is present. Push the Setup button.



DEWESoft Installation Guide

In the image below, the limits of the channel could now be set. We set the limit and extreme value to be 15. The settings have to be enabled with the Ok button.



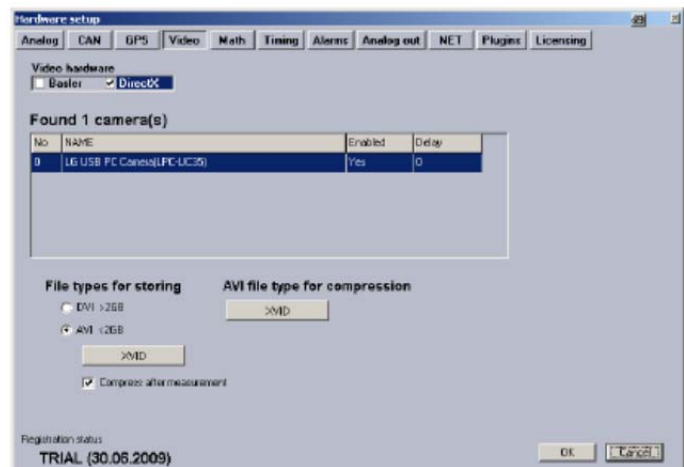
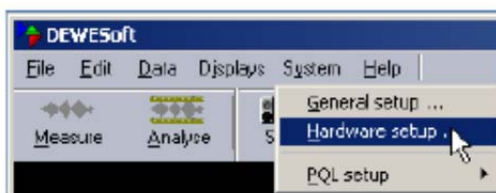
This setting can be changed for every channel.

Video Channel Configuration

If your PC has a web camera, it will be found automatically when DEWESoft is started. The driver of the web camera needs to be installed.

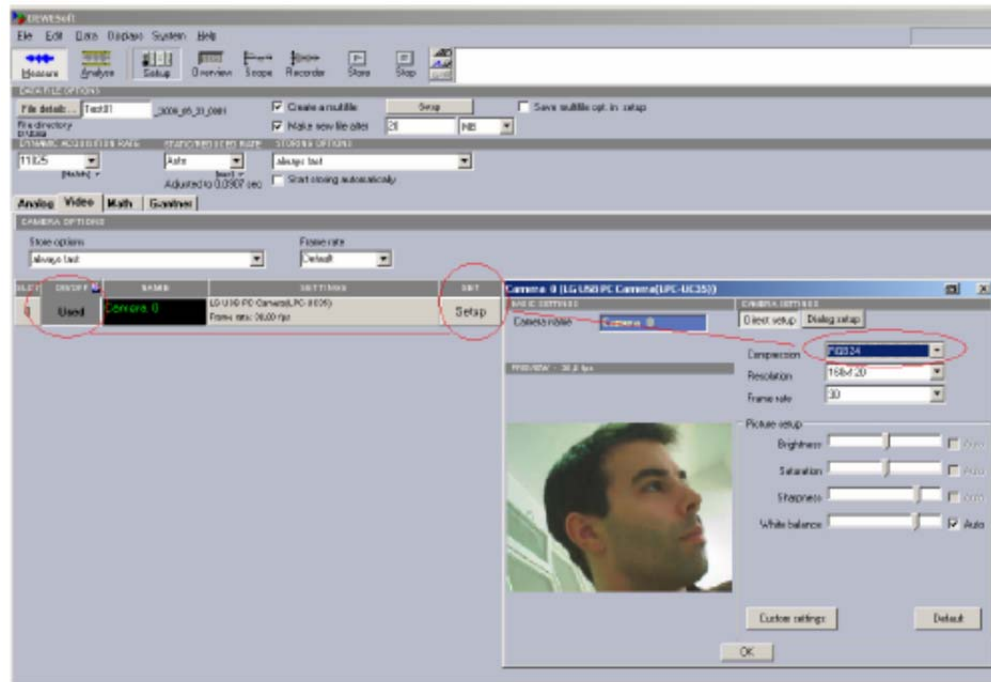
It is possible to connect other web cameras with the PC. These can be used in DEWESoft after their drivers have been installed. The cameras will be detected immediately when starting DEWESoft.

All cameras will be shown after the System/Hardware Setup button is pressed.



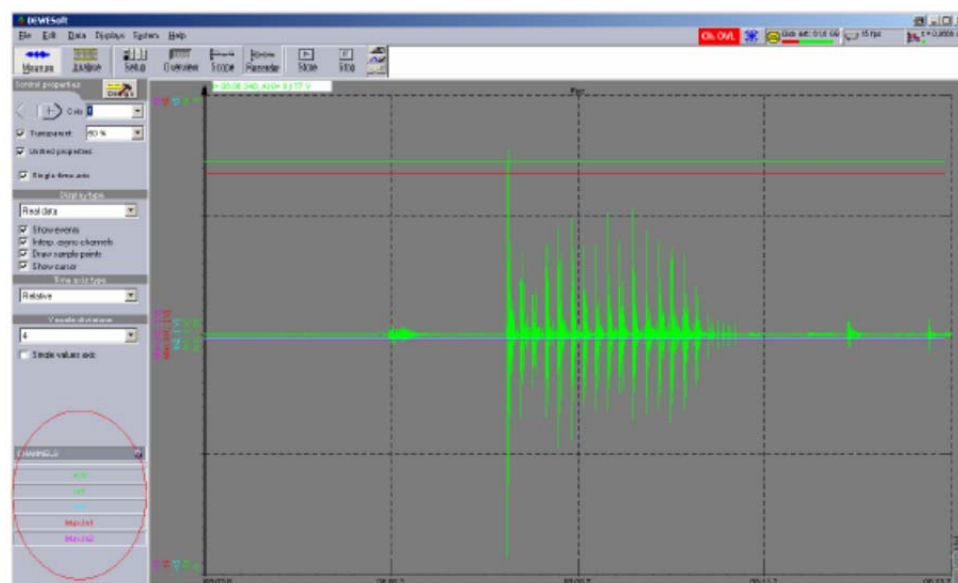
DEWESoft Installation Guide

To activate the camera, use the Measure button and the register card, video. The camera will be enabled when the ON/OFF button is switched from UNUSED to USED. If a test image is not displayed after the setup button is pressed, the compression needs to be changed. This setting depends on the type of web camera used.



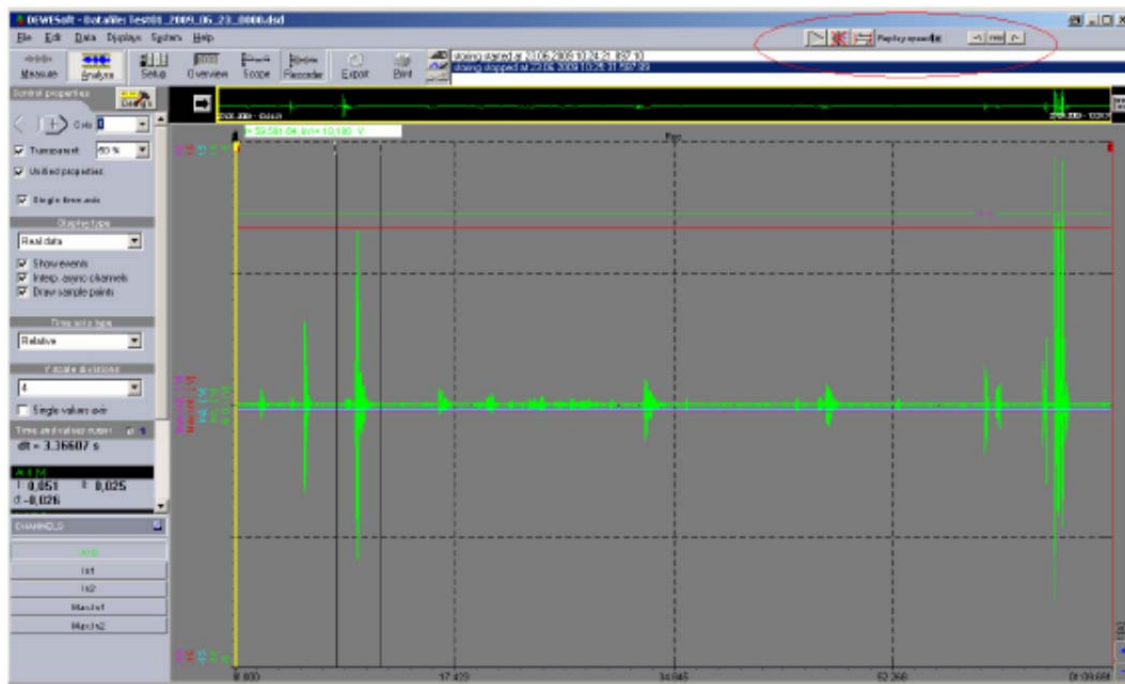
4. Visualization with Recorder

After all channels have been enabled they can be displayed using the recorder button. All channels that were activated will be shown on the right side on the DEWESoft surface.

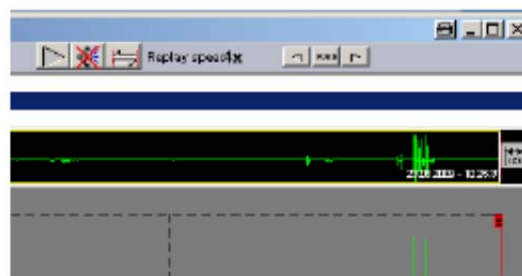


DEWESoft Installation Guide

When you want to store the data in a file, select the store button in the symbol list. The storage will end when the stop button is pressed.



The stored files could be reviewed by pressing the analysis button. With the player button on the right side, the data can be replayed. Different speeds are available.



By pressing the analysis button again, the location where the data is stored is shown. The directory where the data must be stored could be defined on the left side of the screen. The files are categorized by date.