



## Quick Start Guide: IPEmotion Installation and Connection Guide with Gantner Q-series Hardware

Purpose: This document will describe how to install a fresh copy of IPEmotion onto a new PC. We will also describe how to connect IPEmotion with Gantner hardware via the plugin.

Procedure:

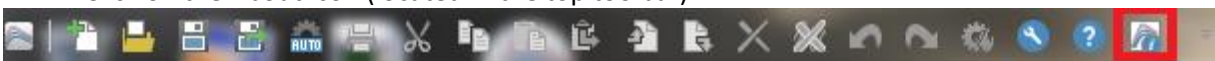
IPEmotion: [http://ftp2.ipetronik.com/free\\_ipemotion/IPEmotion\\_Setup.ZIP](http://ftp2.ipetronik.com/free_ipemotion/IPEmotion_Setup.ZIP)

(Version 03.02.00 as of this document creation date – 1/13/2014)

Plugin: <http://www.gantnerinstruments.com/software%20downloads/ipemotion-plugin.zip>

(Version 01.00.07 as of this document creation date – 1/13/2014)

1. Download and save the 2 files above onto your PC's desktop.
  2. Unzip the ZIP files onto your PC's desktop.
  3. Open the IPEmotion folder and double-click on the IPEmotion executable.
  4. Follow the on-screen instructions to complete the installation.
- (Note: multiple versions of IPEmotion can be installed on the same PC)
5. Start the IPEmotion software.
  6. The software will load as a demo version. If you purchased a licensed version, insert the USB key to an available USB port on your PC.
  7. Click on the About icon (located in the top toolbar)



8. Click on the Licensing button:



9. Click on the Read from dongle button. Follow the remaining on-screen instructions to complete license activation.
10. Double-click on the IPEmotion Plugin executable. Follow on-screen instructions to complete the installation.  
(Note: this plugin will work with multiple version of IPEmotion)

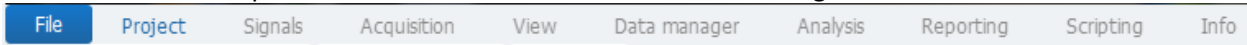


11. Optional: install custom Splash Screen & Icon – Download:  
<http://www.gantnerinstruments.com/software%20downloads/ipemotion-add-ons.zip>
12. Copy & paste the 2 files (applicationicon.png & splash.png) to the following directory:  
C:\Program Files (x86)\IPETRONIK\IPEmotion V03.02.00

**IPEmotion with Gantner Hardware**

- Make sure the Gantner hardware is powered on & connected to the PC via Ethernet cable.
- Make sure the Gantner hardware is configured using test.commander first.

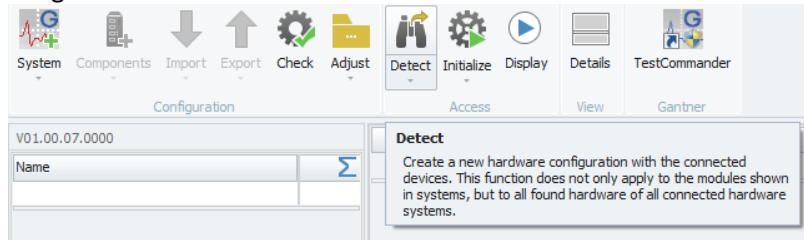
1. Re-start or Open the IPEmotion software. The software is organized into tabs:



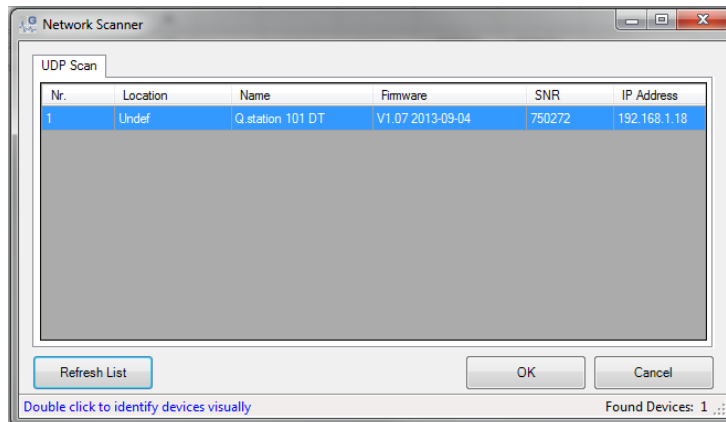
2. A new project will be displayed under the Project Tab. Feel free to fill-in information about the project:

Project properties	
Name	Value
Company name	
Serial number	
Manufacturer	
Project name	
Project manager name	
E-mail address project manager	
User	
E-mail address user	
User login	Support
Description	
IPEmotion version	V03.02.00
File name	
Date	1/13/2014 1:00:41 PM

3. Click on the Signals Tab. Click on the Detect button:



4. The Network Scanner window will appear. The connected controller will appear on the list. Highlight the controller and select OK.

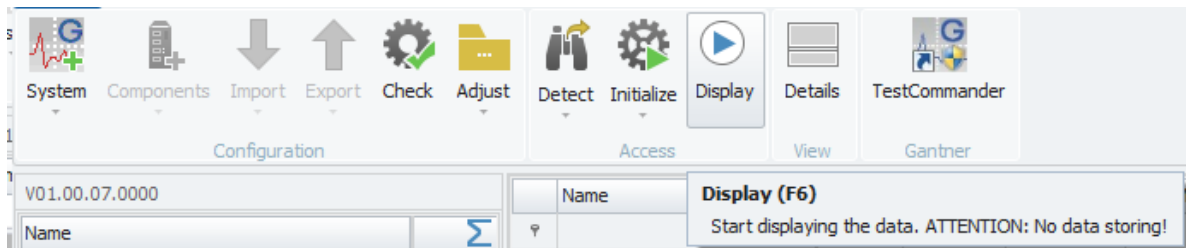




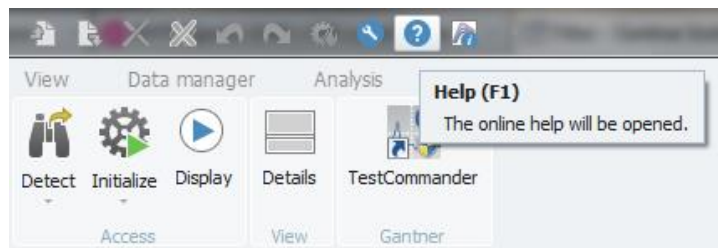
- The variables configured in test.commander will be displayed in the main section of the Signals Tab:

Configuration		Access		View	Gantner				
Name		Name	Active	Unit	Phys Min	Phys Max	Sensor Min	Sensor Max	Sampling rate
V01.00.07.0000									
Name	Σ	Timestamp	<input checked="" type="checkbox"/>		-1.797693...	1.7976931...	-1.7976931...	1.7976931...	1 kHz
		Increment	<input checked="" type="checkbox"/>		-3.402823...	3.4028234...	-3.4028234...	3.4028234...	1 kHz

- Click on the Display button to show live values:



- Use the IPEmotion manual (click on Help icon) for more information:



**Contact us today if you have any further questions!**