



Quick Start Guide: How to Setup Zero & Tare Functionality on Measurement Modules

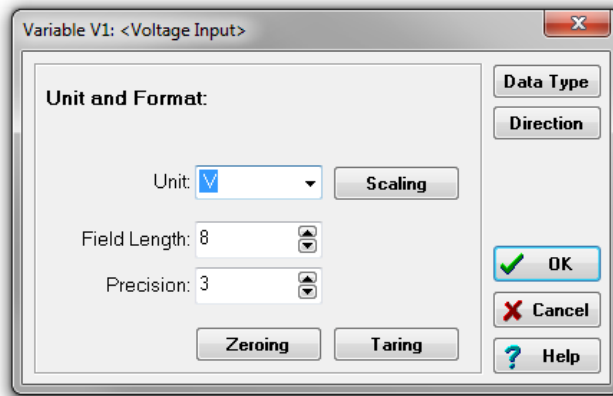
Purpose: It is possible to setup zero/tare functionality on each individual channel of a Gantner measurement module. This is performed using the test.commander software.

Procedure:

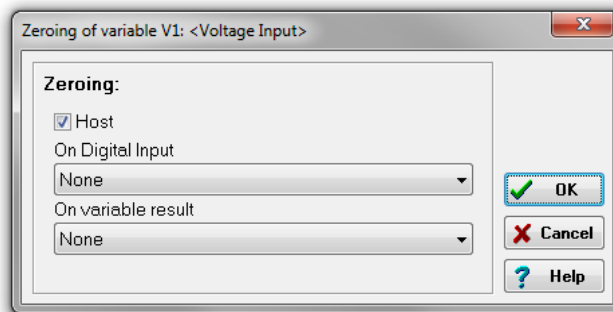
1. Open the module in ICP100 that has the channel you would like to configure.

Infos	Variable Settings	Module Settings								
	Type	Variable Name	Sensor	Type of	Connection	Terminals	Format/Adjustment	Range/Error	Additional	DP Real Cfg.
V1	AI	Voltage Input	Voltage	Single Ended		Connector 1	f.fff.fff [V]	-10.000 10.000	Average Auto	B3h
V2	AI	Load Cell	Bridge	Resistive Full 4 Wire		Connector 2	f.fff.fff [N]	-2.400.000 2.400.000	Average Auto	93h

2. For this example, we will configure V1 (Voltage Input). Double-click the cell under the Format/Adjustment column for the desired variable. The Unit and Format window will appear:

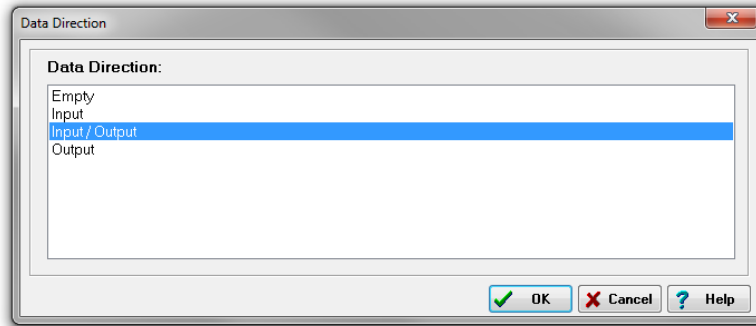


3. Click on the Zeroing button to setup the zero functionality (in the same procedure, click on the Taring button to setup the tare function. The zero function can be activated in 3 ways: via Host (i.e. test.commander), on a Digital Input, or based on a Variable. For this example we will zero the channel via Host. Click OK.





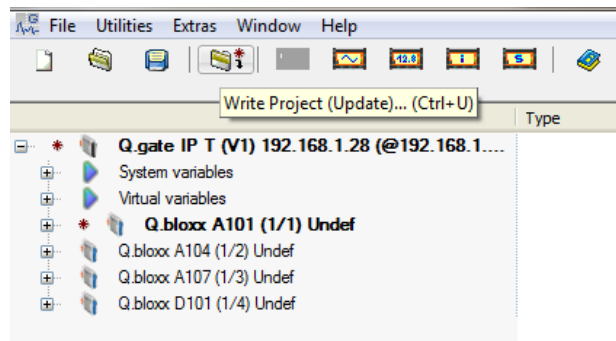
- On the Unit and Format window, click on the Direction button. Set the data direction to Input/Output. Click OK.



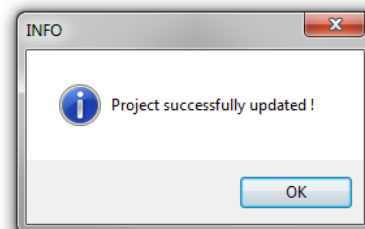
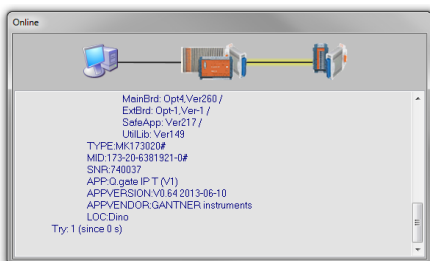
- Click OK on the Unit and Format window.
- After all the desired channels in the module have been configured, save the configuration by clicking on the save icon.

Type	Variable Name	Sensor	Type of	Connection	Terminals	Format/Adjustment	Range/Error	Additional	DP Real Cfg
V1	AI	Voltage Input	Voltage	Single Ended		Connector 1 f,fff [V]	-10.000 Average 10.000 Auto	B3h	
V2	AI	Load Cell	Bridge	Resistive Full 4 Wire		Connector 2 f,fff [N]	-2,400.000 Average 2,400.000 Auto	93h	

- Notice that the measurement module and the controller each has a red star next to the module. This means that the project inside test.commander does not match the configuration inside the controller. Click on the Write Project (Update) button to update the system.

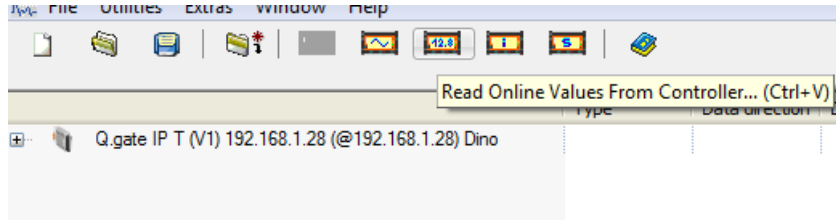


- The controller will update:

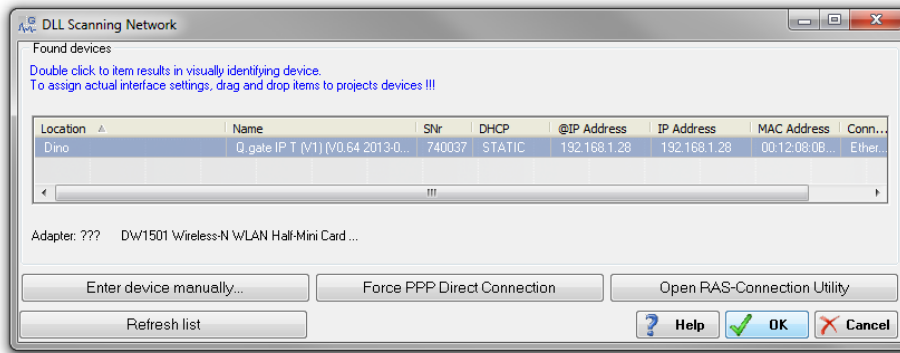




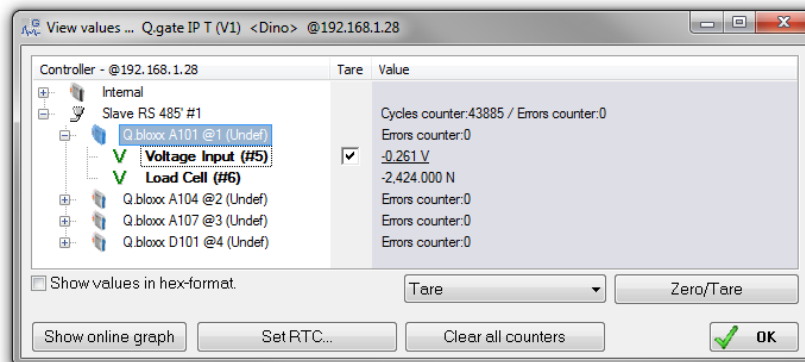
- After the project is updated to the controller, click on the Read Online Values From Controller button:



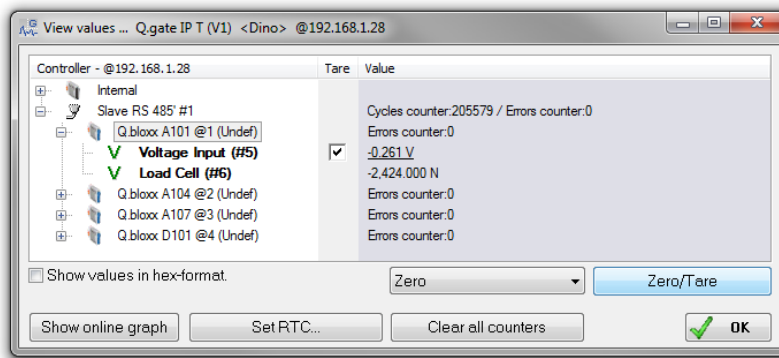
- Highlight the connected controller and click OK.



- Open the module that you want to zero, place a check mark next to the channels that you want to zero:



- Select Zero from the drop down menu and click on the Zero/Tare button.





13. The channels with the check mark are now zeroed:

