

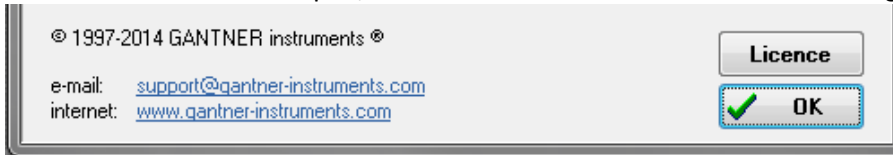


## Quick Start Guide: How to Enter an ICP100 License

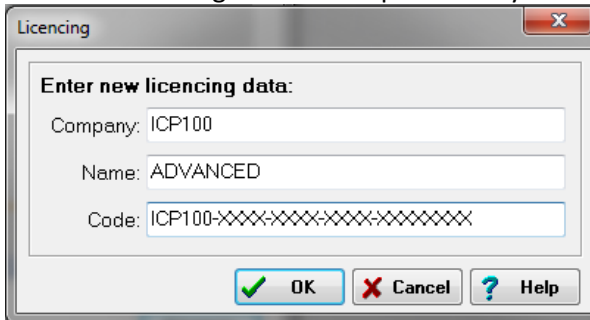
**Purpose:** How to apply an ICP100 license purchased from Gantner Instruments. A licensed copy of ICP100 is required to configure the settings of any Gantner Instruments measurement module (e.series & Q.series). If a test.commander license has already been purchased from Gantner Instruments, a separate ICP100 license does not need to be purchased.

**Procedure:**

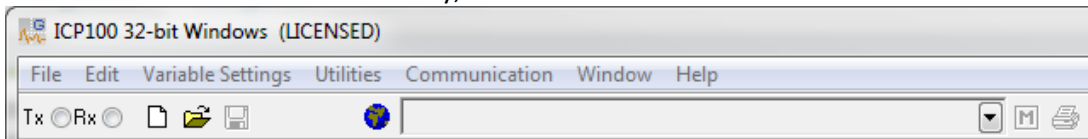
1. Open ICP100. If it is the first time ICP100 has been started on the current PC, it will open in DEMO mode.
2. With ICP100 open, click on Help > About.
3. With the About window open, click on the License button in the bottom right corner.



4. Enter the licensing information provided by Gantner Instruments exactly:



5. If the information is entered correctly, the software will switch from DEMO to LICENSED:



**Contact us today if you have any further questions!**