



Q. uick Start Guide: Configuring the Digital Input Threshold for a Gantner Digital Module using test.commander

Purpose: The digital input modules in the Q.series line of measurement modules have the ability to select the switching threshold. Signal voltage levels or TTL levels are the two threshold options.

Modules: A109 and D101

Threshold:
TTL

or

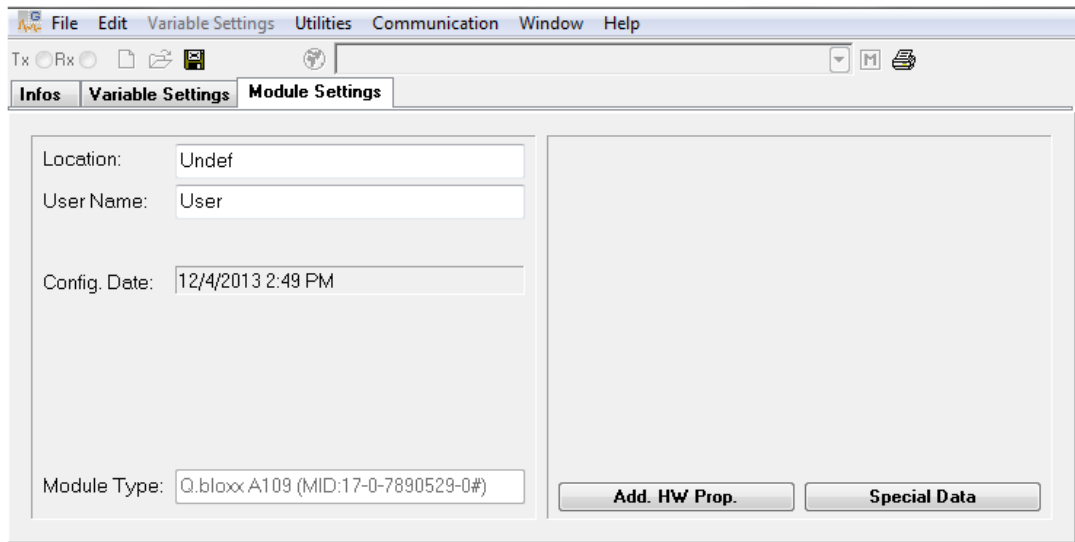
Signal Voltage (0) = -3 to 5 VDC (EN61131-2, Type 1)
Signal Voltage (1) = 11 to 30 VDC (EN61131-2, Type 1)

Specifications:

Maximum Input Voltage: 30 VDC
Maximum Input Current: 2 mA
Isolation Voltage: 500 VDC

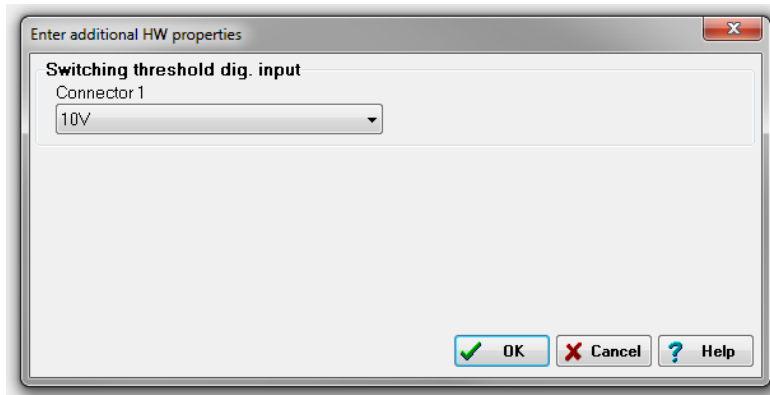
Procedure (using A109 for this example):

1. By Default, the threshold is set to Signal Voltage.
2. Open the desired module in ICP100
3. Go to the **Module Settings** tab:

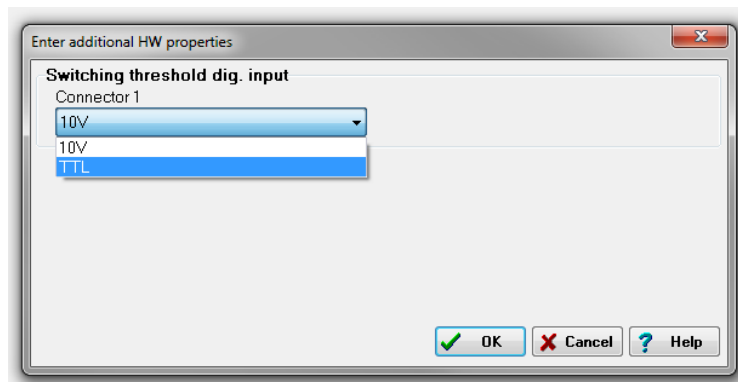




4. Press the **Add. HW Prop.** Button and the following window will appear:



5. Notice that Connector 1 (digital inputs on the A109 are assigned to Connector 1) has the threshold configured for 10V (Signal Voltage option).
6. The threshold can be changed to TTL by selecting TTL. Click OK to confirm the change.



7. Make sure to save the module configuration and update the project to the controller.

Contact us today if you have any further questions!