

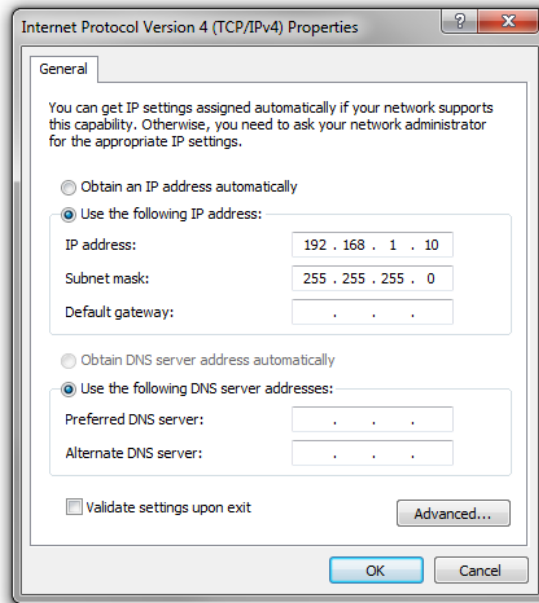


Quick Start Guide: Connecting to a Gantner DAQ System for the 1st Time

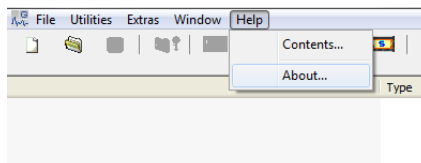
Purpose: This guide will describe the first few steps to connect a new Gantner Instruments DAQ system to a PC using test.commander.

Procedure:

1. Connect the hardware together (controller and measurement modules)
2. Install the test.commander software onto the PC and enter license information.
3. Configure a static IP address for the PC:
 - Control Panel > Network and Internet > Network and Sharing Center > Change Adapter Settings > Right-click on Local Area Connection > Properties > Highlight Internet Protocol Version 4 (TCP/IPv4) > Click Properties
 - Give the PC and IP address on the same network as the controller.
 - The Gantner controller is shipped with a default IP address of 192.168.1.28
4. For this example we will use the following configuration (click OK to confirm changes):

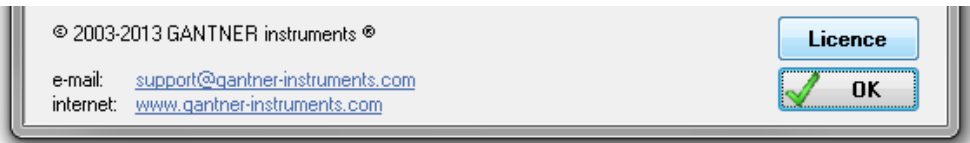


5. Provide power to the modules and connect an Ethernet cable from the controller to the PC. The controller can be connected to the PC via a switch.
6. Start the test.commander software. Create a New Project (File > New Project).
7. Click on Help > About:

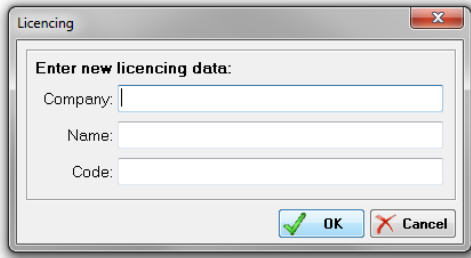




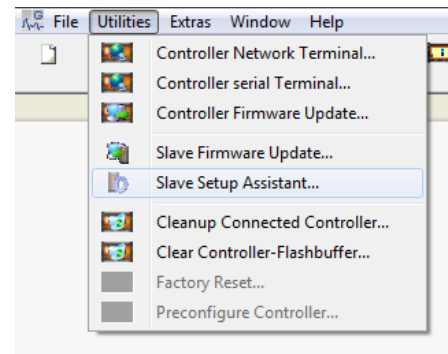
- Click on the License button at the bottom of the page.



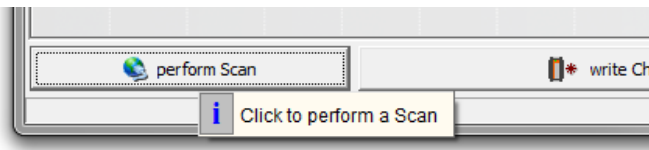
- Enter your license information into the appropriate sections and click OK.



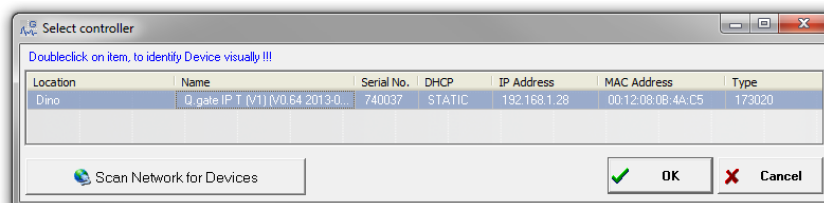
- Click on Utilities > Slave Setup Assistant:
(Typically, these steps are not required with a Q.brixx System)



- Click perform Scan:

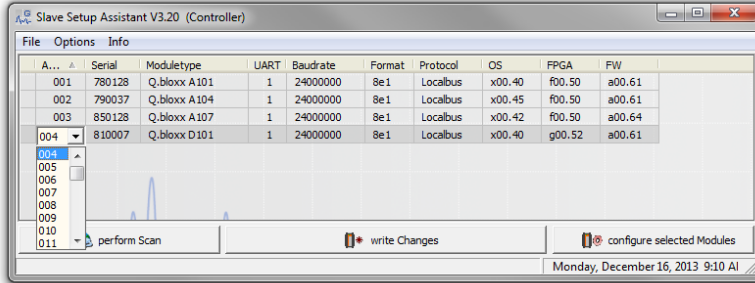


- Highlight the connected controller and click OK.

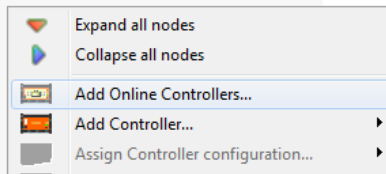




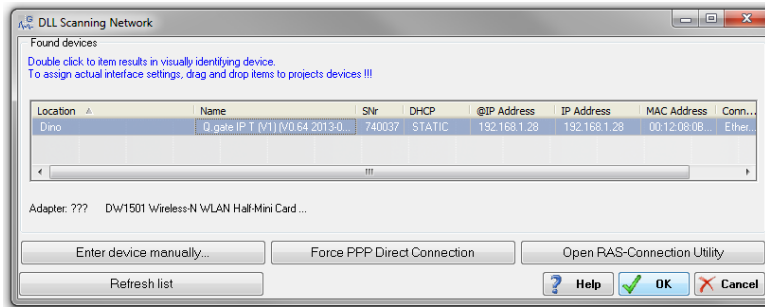
13. The connected measurement modules will be displayed. If this is a new system being configured, the modules will all have an address of 1 (default address). Modules connected within the same system require a unique address. To change the address of any module, click on the box under the “Address” column for the module. Change to the desired address, click on write Changes.



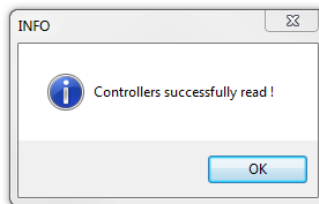
14. Within the blank project page, right-click on the mouse and select “Add Online Controllers”.



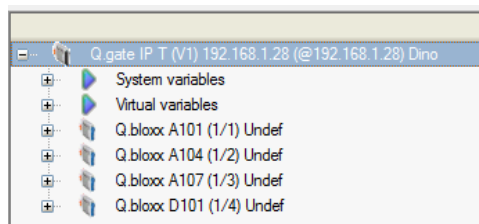
15. Select the connected controller and click OK.



16. The software will scan the hardware; click OK to complete the scan.

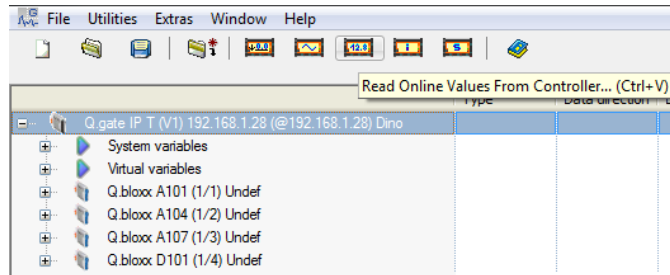


17. The modules (controller and measurement modules) will be added to the project.

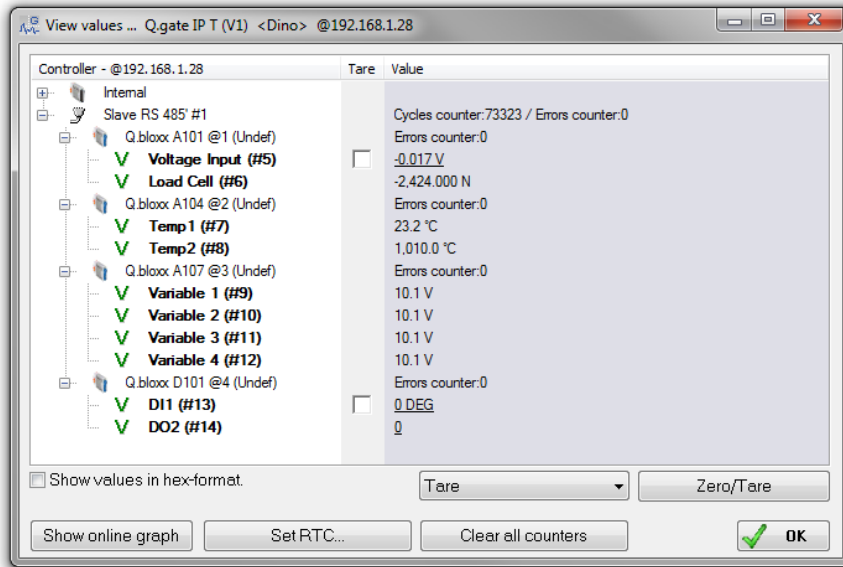




18. Click on “Read Online Values from Controller” to display live values.



19. The live values (real or virtual) from each measurement module will be displayed:



20. Click on “Show online graph” to open test.viewer.

