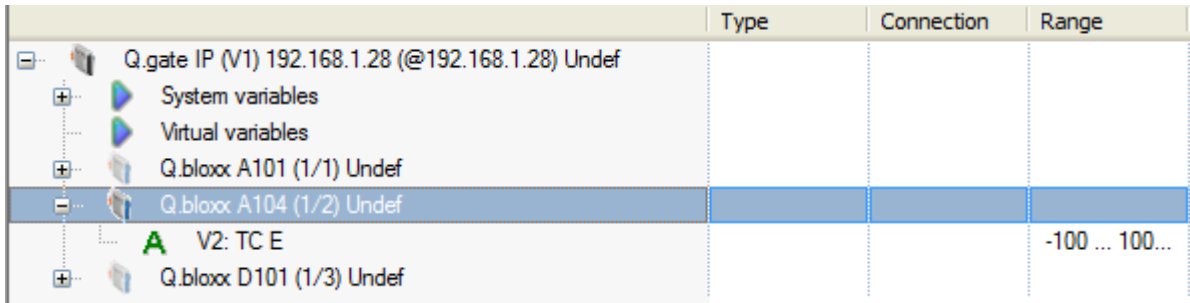


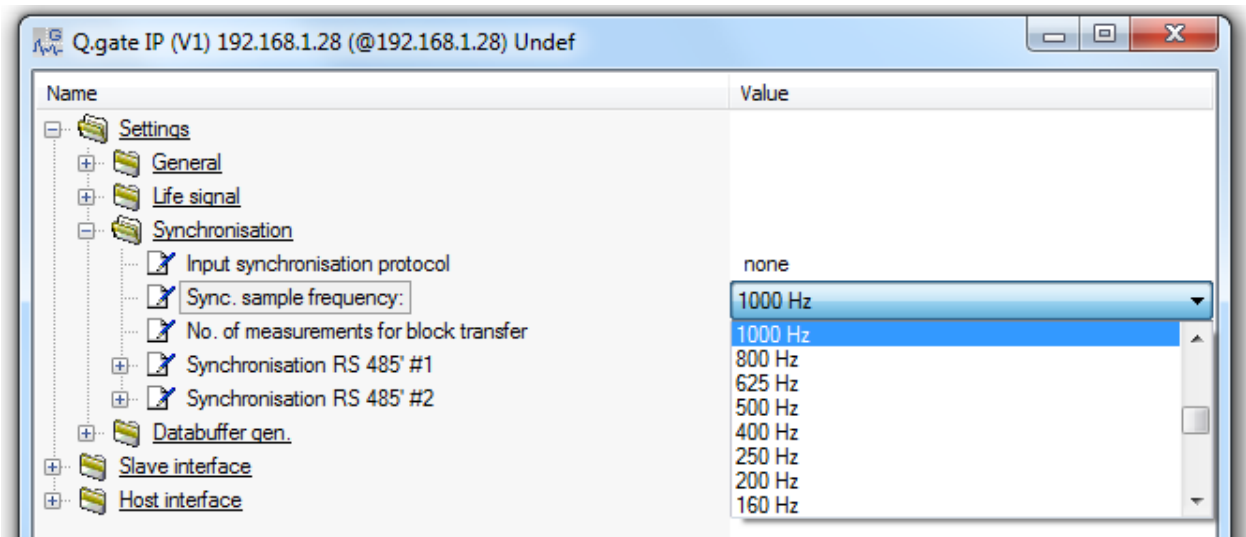
## Setting up Logger Wizard in test.commander

1. Setup all desired channels in test.commander. In this example I have 1 x TC type E configured on an A104 module.



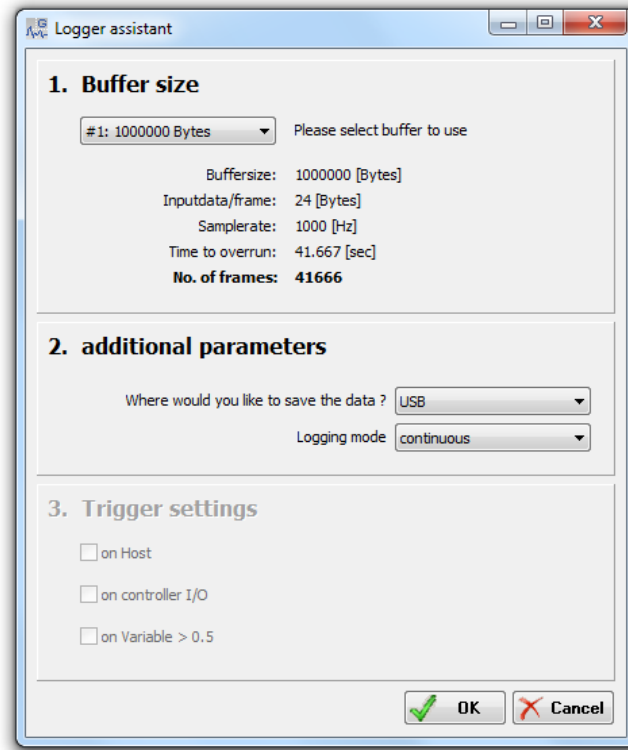
	Type	Connection	Range
Q.gate IP (V1) 192.168.1.28 (@192.168.1.28) Undef			
System variables			
Virtual variables			
Q.bloxx A101 (1/1) Undef			
Q.bloxx A104 (1/2) Undef			
V2: TC E			-100 ... 100...
Q.bloxx D101 (1/3) Undef			

2. Setup the desired sync rate of the Gantner system. Double click on the controller (Q.gate IP), selecting settings, synchronization, sync sample frequency

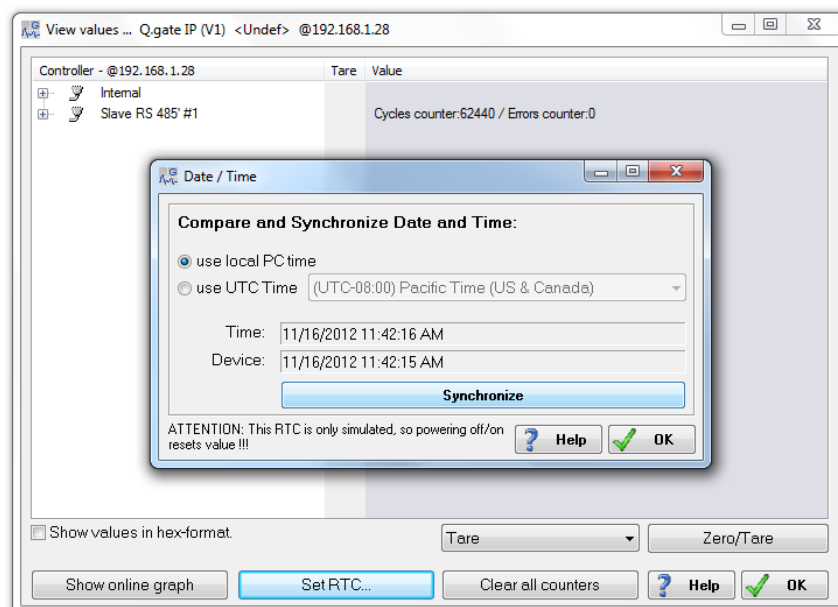


3. Setup logging wizard:
  - a. Right click on controller

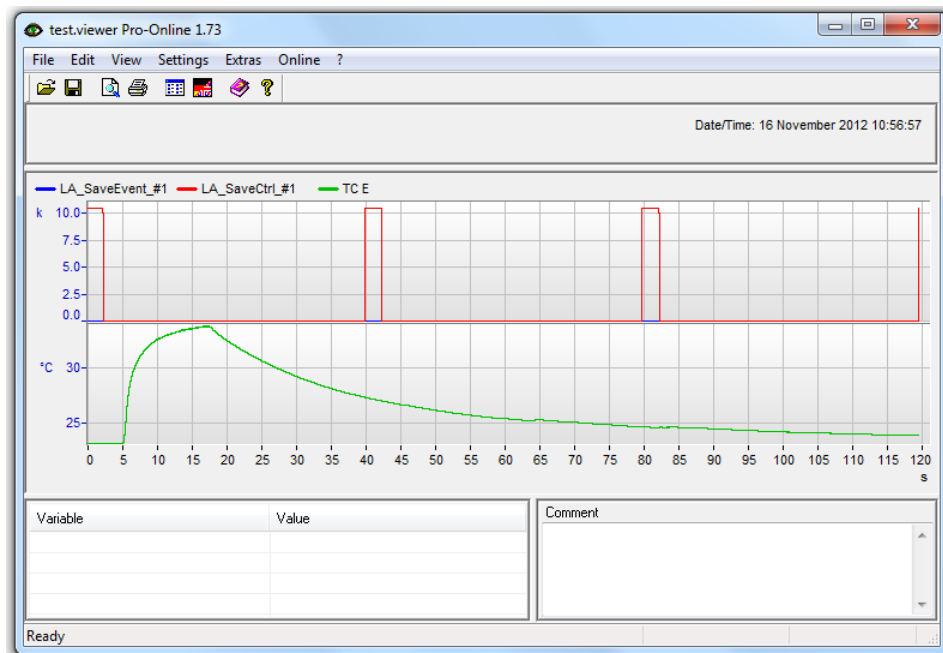
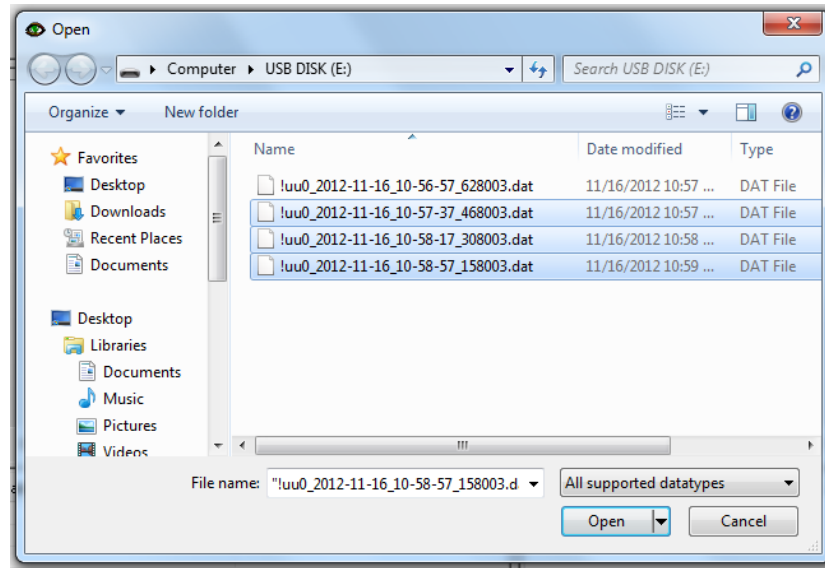
- b. Select Logger wizard
- c. Select which buffer to log
- d. Select location to save data: USB
- e. Select logging mode: continuous



4. Save project to controller.
5. Click on read online values from controller.
6. Click on Set RTC: use local PC time, click on synchronize.



7. Data is now being logged to the USB with time stamped synchronized to your PC's clock.
8. Remove the USB from controller and attach to PC to collect data.
9. Run test.viewer on PC
  - a. Click on file
  - b. Append file
  - c. Select all files except the first file
  - d. Click on open
  - e. Data from multiple files are combined together on the screen



10. Click on Settings, ASCII save options. Make sure milliseconds are checked and make sure Date & Time is checked. Click ok.
11. Click on File, Save As: choose desired format.

12. Notice the time resolution is saved in milliseconds:

A	B	C	D	E	F
		LA_SaveEve	LA_SaveCtrl	TC E	
		[ ]	[ ]	[ °C]	
11/16/2012	10:56:57 AM.667	0.5005	10502	23.1245	
11/16/2012	10:56:57 AM.668	0.5005	10502	23.1245	
11/16/2012	10:56:57 AM.669	0.5005	10502	23.1245	
11/16/2012	10:56:57 AM.670	0.5005	10502	23.1245	
11/16/2012	10:56:57 AM.671	0.5005	10502	23.1245	
11/16/2012	10:56:57 AM.672	0.5005	10502	23.1245	
11/16/2012	10:56:57 AM.673	0.5005	10502	23.1245	
11/16/2012	10:56:57 AM.674	0.5005	10502	23.1245	
11/16/2012	10:56:57 AM.675	0.5005	10502	23.1245	
11/16/2012	10:56:57 AM.676	0.5005	10502	23.1245	
11/16/2012	10:56:57 AM.677	0.5006	10502	23.1245	
11/16/2012	10:56:57 AM.678	0.5006	10502	23.1245	
11/16/2012	10:56:57 AM.679	0.5006	10502	23.1245	
11/16/2012	10:56:57 AM.680	0.5006	10502	23.1245	
11/16/2012	10:56:57 AM.681	0.5006	10502	23.1245	
11/16/2012	10:56:57 AM.682	0.5006	10502	23.1245	
11/16/2012	10:56:57 AM.683	0.5006	10502	23.1245	
11/16/2012	10:56:57 AM.684	0.5006	10502	23.1245	
11/16/2012	10:56:57 AM.685	0.5006	10502	23.1245	
11/16/2012	10:56:57 AM.686	0.5006	10502	23.1245	
11/16/2012	10:56:57 AM.687	0.5062	10502	23.1236	
11/16/2012	10:56:57 AM.688	0.5062	10502	23.1236	
11/16/2012	10:56:57 AM.689	0.5062	10502	23.1236	
11/16/2012	10:56:57 AM.690	0.5062	10502	23.1236	