

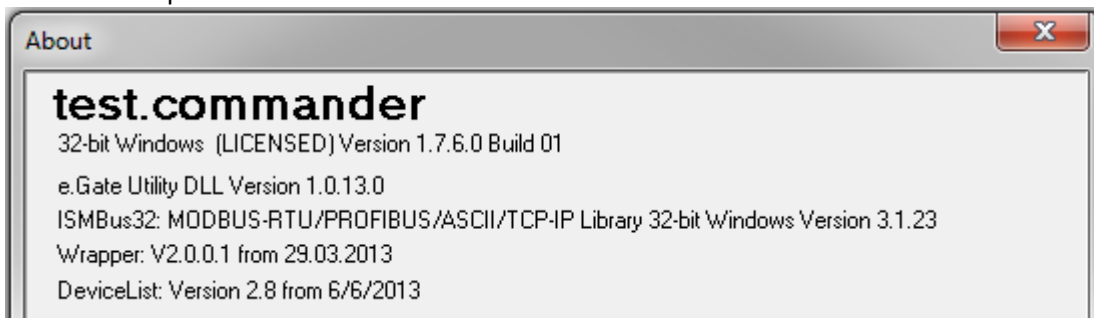


Quick Start Guide: How to Update the Firmware of Controllers & Measurement Modules

Purpose: Test controllers and modules are shipped from the factory with the most up to date firmware. However, as modules get older, it is necessary to verify that these units have the most up to date firmware possible. This document will explain the procedure to check if a controller needs to be updated and how to update.

Procedure:

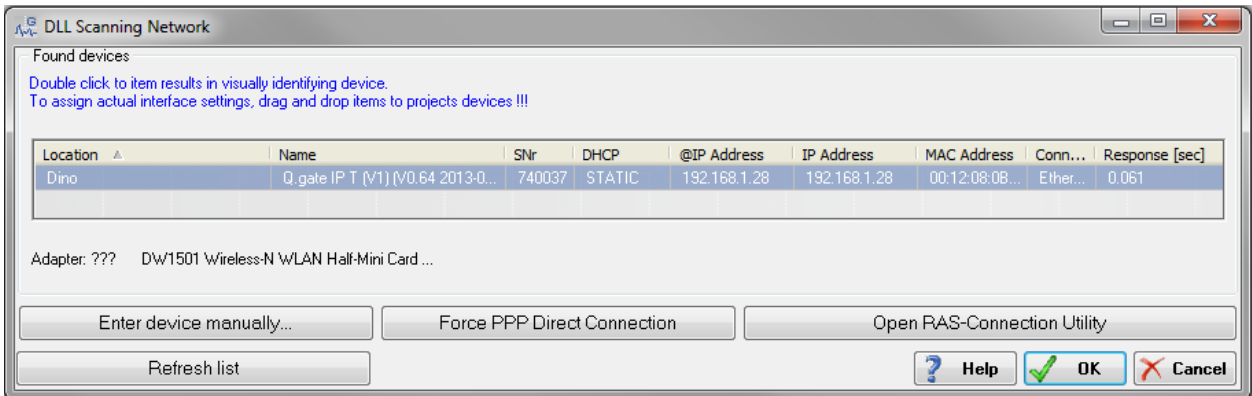
1. The first step that must always be performed is to verify that the most updated version of test.commander is installed.
- Open test.commander
 - Click on Help > About



- The version above is 1.7.6.0 Build 01
- Download the latest version from the Gantner website:
<http://www.gantnerinstruments.com/software%20downloads/test.commander.zip>

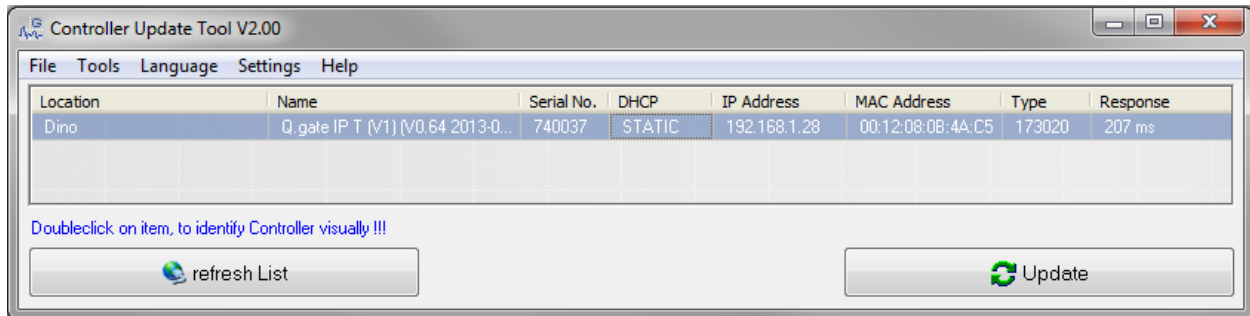
Controller Firmware:

1. Utilities > Controller Firmware Update
The DLL Scanning Network window will appear and display all connected controllers. The firmware version of the controller is displayed under the Name column. In the example below, the Q.gate IP T has a firmware of V0.64.

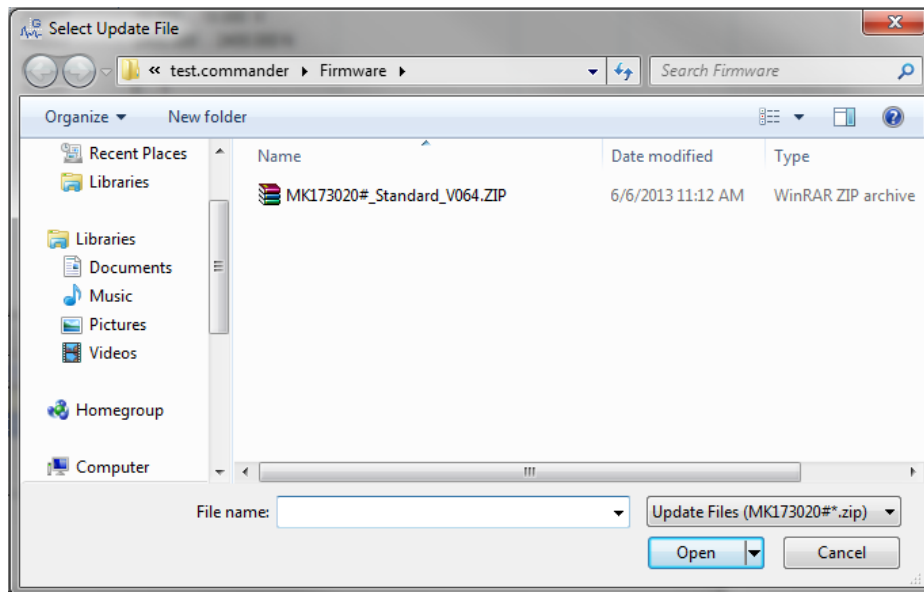




2. Highlight the controller and select the OK button.
3. The Controller Update Tool window will appear showing the same connected controller. Again, the firmware version of the controller is displayed under the Name column. Highlight the controller and click on the Update button.



4. test.commander will display all available firmware for the type of connected controller. If you updated to the most up to date version of test.commander, you will have the most up to date version of the firmware available. If the firmware version displayed is the same as the firmware already loaded, click the Cancel button (the controller's firmware doesn't need to be updated). Otherwise, select the firmware and click on the Open button.

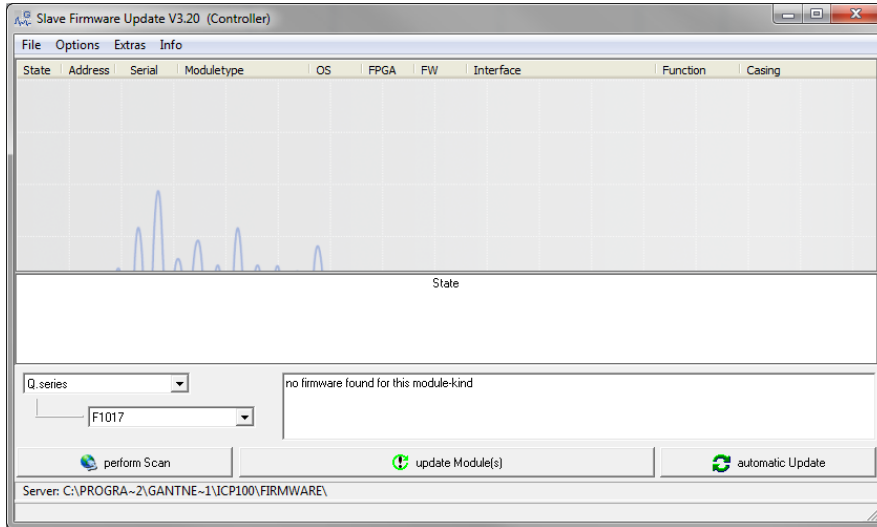


5. After clicking the Open button, test.commander will update the firmware to the controller. After the process is complete, proceed as normal.

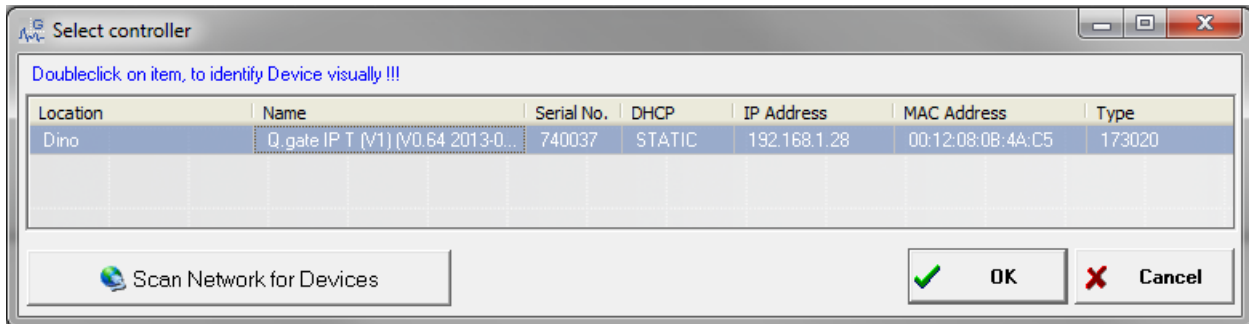


Measurement Module Firmware:

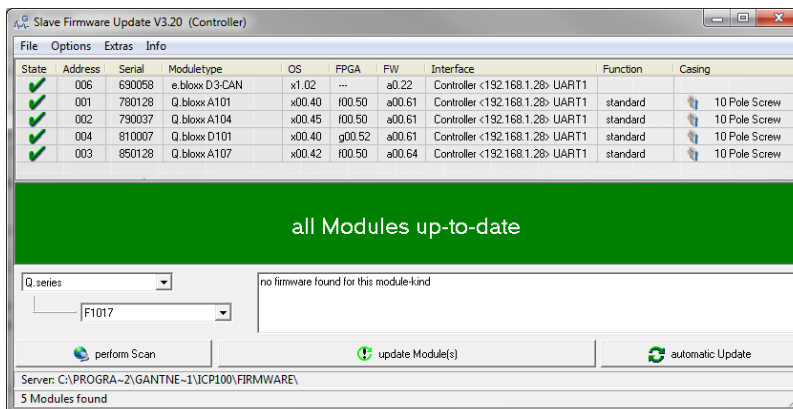
1. Utilities > Slave Firmware Update
The Slave Firmware Update window will appear.
Click on the perform Scan button (bottom left corner)



2. Select the controller that is connected to the measurement modules and click OK.



3. The Slave Firmware Update window will display all the connected measurement modules and the status of the firmware; if it is updated or out of date. A green check mark will be displayed next to all updated modules and a red X next to an out dated module.





4. If a module(s) is out of date, click on the update Module(s) button. Each module that requires an update requires 3 files to be updated.
5. When all modules are updated, proceed as normal.

Contact us today if you have any further questions!